

POWERHOUSE™

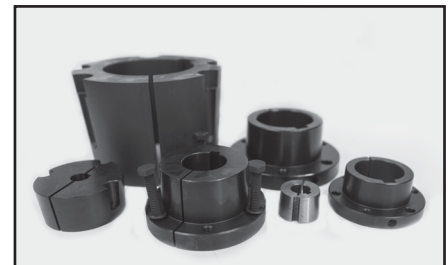
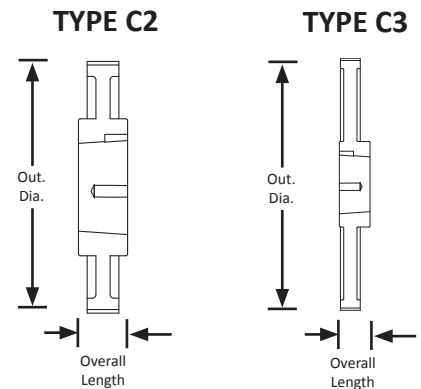
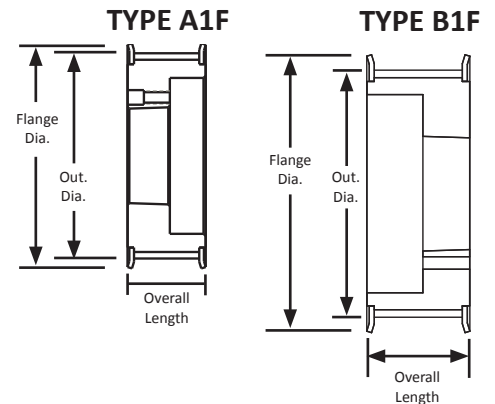
TIMING PULLEYS

(Compatible with PowerGrip® GT2® and PowerGrip® GT3® pitch)

8 mm Pitch
For 20 mm Wide Belts
Steel/Iron
Black Oxide Plating
Taper-Lock® Style



| Part Number | No. of Teeth | Type | Pitch Dia. (in) | Out. Dia. (in) | Flange Dia. (in) | Bushing | Face Width (in) | Overall Length (in) |
|---------------|--------------|------|-----------------|----------------|------------------|---------|-----------------|---------------------|
| 22-8P20-1108 | 22 | A1F | 2.206 | 2.152 | 2.559 | 1108 | 1.130 | 1.130 |
| 24-8P20-1108 | 24 | A1F | 2.406 | 2.352 | 2.756 | 1108 | 1.130 | 1.130 |
| 25-8P20-1108 | 25 | A1F | 2.507 | 2.453 | 2.953 | 1108 | 1.130 | 1.130 |
| 26-8P20-1108 | 26 | A1F | 2.607 | 2.553 | 2.953 | 1108 | 1.130 | 1.130 |
| 27-8P20-1108 | 27 | A1F | 2.707 | 2.653 | 3.100 | 1108 | 1.130 | 1.130 |
| 28-8P20-1108 | 28 | A1F | 2.807 | 2.753 | 3.150 | 1108 | 1.130 | 1.130 |
| 29-8P20-1108 | 29 | A1F | 2.908 | 2.854 | 3.256 | 1108 | 1.130 | 1.130 |
| 30-8P20-1210 | 30 | A1F | 3.008 | 2.954 | 3.346 | 1210 | 1.130 | 1.130 |
| 31-8P20-1210 | 31 | A1F | 3.108 | 3.054 | 3.420 | 1210 | 1.130 | 1.130 |
| 32-8P20-1210 | 32 | A1F | 3.208 | 3.154 | 3.543 | 1210 | 1.130 | 1.130 |
| 33-8P20-1210 | 33 | A1F | 3.309 | 3.255 | 3.735 | 1210 | 1.130 | 1.130 |
| 34-8P20-1610 | 34 | A1F | 3.409 | 3.355 | 3.819 | 1610 | 1.130 | 1.130 |
| 35-8P20-1610 | 35 | A1F | 3.509 | 3.455 | 3.938 | 1610 | 1.130 | 1.130 |
| 36-8P20-1610 | 36 | A1F | 3.609 | 3.555 | 3.938 | 1610 | 1.130 | 1.130 |
| 37-8P20-1610 | 37 | A1F | 3.710 | 3.656 | 4.050 | 1610 | 1.130 | 1.130 |
| 38-8P20-1610 | 38 | A1F | 3.810 | 3.756 | 4.156 | 1610 | 1.130 | 1.130 |
| 39-8P20-1610 | 39 | A1F | 3.909 | 3.855 | 4.331 | 1610 | 1.130 | 1.130 |
| 40-8P20-1610 | 40 | A1F | 4.010 | 3.956 | 4.331 | 1610 | 1.130 | 1.130 |
| 42-8P20-1610 | 42 | A1F | 4.211 | 4.157 | 4.687 | 1610 | 1.130 | 1.130 |
| 44-8P20-2012 | 44 | B1F | 4.411 | 4.357 | 4.764 | 2012 | 1.130 | 1.250 |
| 46-8P20-2012 | 46 | B1F | 4.612 | 4.558 | 5.005 | 2012 | 1.130 | 1.250 |
| 48-8P20-2012 | 48 | B1F | 4.812 | 4.758 | 5.157 | 2012 | 1.130 | 1.250 |
| 50-8P20-2012 | 50 | B1F | 5.013 | 4.959 | 5.320 | 2012 | 1.130 | 1.250 |
| 53-8P20-2012 | 53 | B1F | 5.313 | 5.259 | 5.763 | 2012 | 1.130 | 1.250 |
| 56-8P20-2012 | 56 | B1F | 5.614 | 5.560 | 5.945 | 2012 | 1.130 | 1.250 |
| 64-8P20-2012 | 64 | B1F | 6.416 | 6.362 | 6.772 | 2012 | 1.130 | 1.250 |
| 72-8P20-2012 | 72 | B1F | 7.218 | 7.164 | 7.575 | 2012 | 1.130 | 1.250 |
| 80-8P20-2517 | 80 | B1F | 8.02 | 7.966 | 8.386 | 2517 | 1.130 | 1.250 |
| 90-8P20-2517 | 90 | C2 | 9.023 | 8.969 | - | 2517 | 1.130 | 1.750 |
| 112-8P20-2517 | 112 | C2 | 11.229 | 11.175 | - | 2517 | 1.130 | 1.750 |
| 144-8P20-2517 | 144 | C3 | 14.437 | 14.383 | - | 2517 | 1.130 | 1.750 |
| 192-8P20-3020 | 192 | C3 | 19.249 | 19.195 | - | 3020 | 1.130 | 2.000 |



For matching Taper-Lock® bushings, see page 325.